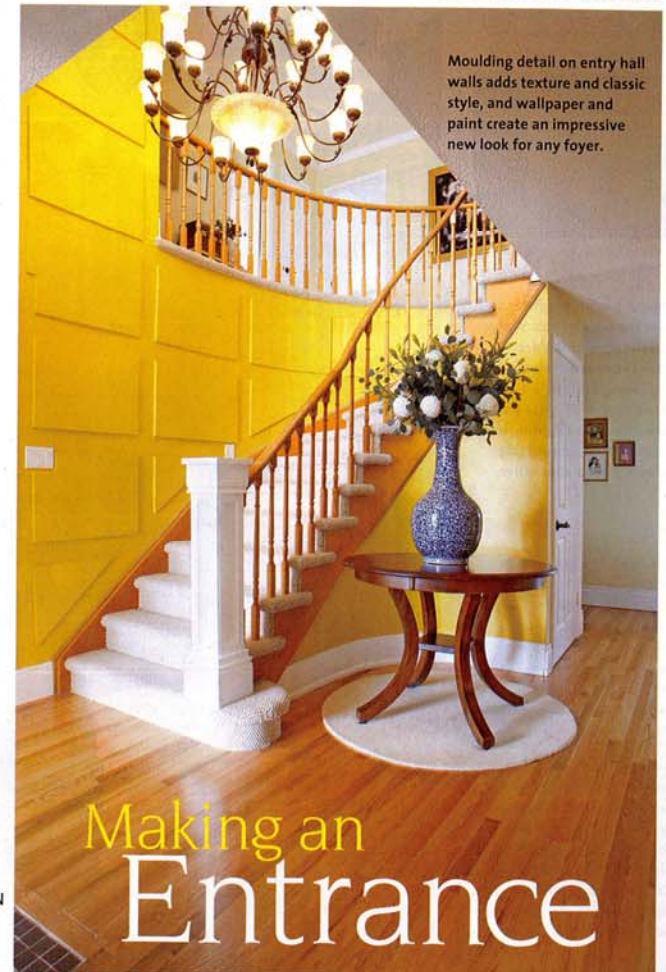


Moulding detail on entry hall walls adds texture and classic style, and wallpaper and paint create an impressive new look for any foyer.

Create an inviting entrance to your home with rich colours, practical design and functional furniture to suit your style.

TEXT BY
KAREN KIRK
DESIGNED BY
ANDRIKA LAWREN
PHOTOGRAPHY BY
PAUL CHMIELOWIEC



Making an Entrance

AN ENTRANCE HALL offers your first opportunity to welcome family and friends, and gives everyone a sense of your home's style. Even if it's not large, the reception area is a practical space that you can decorate with welcoming colours, comfortable furnishings and decorative accessories to showcase your personal style.

Here, designer Andrika Lawren of HGTV's "My Parents' House" updated a two-storey foyer with a curving staircase into a grand traditional-style entrance. If you're looking to create a more modern country or contemporary look, she shows you how with her picks and tips on page 190. Most important, Lawren says, "don't be afraid to mix and match your styles for the most impact."



Choose a light fixture that suits the scale of your space and the style of the decor. Alter the mood of the foyer by placing lighting on a three-way or dimmer switch. When overhead lighting isn't necessary, an accent table lamp is a good alternative.

TIP

The foyer, a formal place to greet guests and store outerwear, should not be confused with a mudroom, an informal entrance to the home, where family members can remove dirty or wet clothing, or exuberant pets can be brought into the house.

A mirror is a must in any entrance hall, and good for last-minute checks before leaving the house. It also reflects light around the room and visually expands the space. Colourful floral arrangements, sculptural accessories or art add personality and style.

A table or credenza provides a convenient place to drop keys, cellphones and mail. Ensure that it doesn't impede traffic flow and avoid making it a catchall for whatever gets dragged into the house. A bench and coatrack come in handy, too. The objective is to make your guests' entry as easy as possible.



To update the staircase, a custom newel post was installed to add weight and form to the foot of the staircase, and the steps get a new durable Berber carpet.

5 Haute Hues for Entrance Halls

Using colour in your entrance hall is a quick and easy way to set the tone for the rest of your home.

Class Act

This rich, regal blue (Sico New Jeans) makes a strong impression. Dark blues are dramatic when paired with metallics, especially brass or gold. A large gilded mirror would be stunning against this deep colour.

Calming Power

Using this sultry, moody shade (Beautiful Tone Santropol) is a subtle way to introduce the impressive colour purple into your space. Its white undertone allows it to feel light and calm. Pair it with silver or white for a contemporary look. When purple is mixed with red accents and yellow-toned metallics, the space takes a traditional turn.

The Great Mediator

This earthy neutral (Valspar Sandalwood), with hints of green and touches of brown, is perfect for pairing with natural fibres, warm woods and organic shapes. Have some fun: for pop effect, try bright accents such as orange and cobalt blue against this quiet colour.

Unlimited Potential

This sexy grey (Benjamin Moore Cinder) is an absolute showstopper. Sophisticated and versatile, it works with any colour or style. Pair it with bold, graphic patterns for a slick, modern look, or use it on a feature wall complemented by adjacent walls painted in warm cream tones.

Dazzling Delight

This deep gold (Behr Golden Cricket) is perfect for brightening a space while creating a bold impact. Designer Andrika Lawren used this striking colour in our featured foyer to create an updated traditional look and showcase the hardwood floors and wood furnishings.

Add decorative glass sidelight panels and transoms to the front door to maximize daylight. Guests typically notice the condition of the front door and it gives them their first impression of what the interior may be like.

On wood and ceramic floors, use a nonslip mat to protect the flooring and prevent slips and falls. Lawren designed a mosaic "carpet" inlay at the door to protect the new oak hardwood floors.



canadianliving.com/march

View the entrance makeover video from HGTV's "My Parents' House."

get the look

WHAT'S YOUR STYLE? We asked Andrika Lawren to scour the shops for furnishings and accessories to complement two popular Canadian styles: modern country and contemporary.

MODERN COUNTRY

Durable finishes and casual styling make this look perfect for a busy family foyer.



Oyster Bay Collection accent table with one shelf and four drawers in Oyster White, Stoney Creek Furniture.

Therma-Tru fibreglass Rustic Craft Door in walnut stain finish with antique brass hardware, The Burlington Door Centre.



Fifteen-light chandelier in Olde Bronze finish, Royal Lighting.



Branching Out print, Urban Barn.

Torlys linoleum Uniclick flooring in Azure Blue, available in 12-inch square tiles and 12- x 36-inch planks.



Ornamental black bamboo and wood birdcage, Urban Barn.

Wide plank 5 3/4-inch x 8-foot preprimed bead board, Elite Trimworks.

CONTEMPORARY

Dramatic yet practical, this look will make a striking impression.



Chunky wood console table in Cinnabar; storage ottoman upholstered in woven jute. Both West Elm.

Insulated steel entrance door, Tru Executive Door Collection, EXD-103, TruTech Door Systems.



Ziyi eight-light chandelier in hand-rubbed antique brass with natural paper shades, Sesselite.



Andre rectangular concave steel wall mirror, Crate and Barrel.

Basso and Brooke for Graham and Brown Pathway in charcoal.



Cleo table lamp with linen-cotton drum shade and matte-finish solid brass base, Crate and Barrel.

Campani Graphics porcelain tile in Blanco, Stone Tile International, available in 12-inch square and 12- x 24-inch tiles.

FOR SHOPPING INFORMATION, SEE PAGE 196